

TEXAS EXES LEADERSHIP

TEXAS EXES BOARD OF DIRECTORS: This 25-person Board of Directors is given the entire charge and control of The Association and its affairs, funds, and property, unless otherwise stated in the Bylaws of the Ex-Students Association of the University of Texas (Texas Exes).

PRESIDENT OF THE BOARD: Responsible for the general direction of the affairs of the Texas Exes; presides at Board & Council meetings; acts as ex-officio member of all committees.

EXECUTIVE DIRECTOR: CEO of the Texas Exes; director of the staff; responsible for administration of all activities and association development as prescribed by the Board of Directors; acts as ex-officio non-voting member of all committees.

EXECUTIVE COMMITTEE: Subject to the control of the Board of Directors, the Executive Committee shall manage and control the property, business, and affairs of the Texas Exes; Members: President (serves as Chair), President-Elect, Chairman, Treasurer, Secretary, Scholarship Chair, Investments Chair, Executive Director (ex-officio non-voting).

PAST PRESIDENTS FORUM: Deliberates, discusses, and provides vision for the future direction of the Texas Exes in serving the long-term interests of The University.

NOMINATING COMMITTEE: The committee nominates officers and other Texas Exes leaders in accordance with Bylaws; Members: Chairman (serves as Chair), President, two most recent Past Presidents, Executive Director (ex-officio non-voting).

TEXAS EXES COUNCIL: Composed of a broad and diverse cross-section of members; advises the Board of Directors; elects or approves those who serve on the Board.

LONGHORN VILLAGE BOARD OF DIRECTORS: This 3 to 12-person Board of Directors, elected by the Texas Exes Board of Directors, governs Longhorn Village, an independent, single purpose, not-for-profit entity sponsored by the Texas Exes. Texas Exes has no financial risk associated with the development and/or ongoing operation of Longhorn Village.

TEXAS EXES SCHOLARSHIP FOUNDATION (TESF) BOARD OF DIRECTORS: The Texas Exes Scholarship Foundation is a nonprofit charity and Type I supporting organization of the Texas Exes, whose purpose is to hold in trust and administer scholarship funds. The TESF is governed by a 7-person Board of Directors, elected by the Texas Exes Board of Directors.

TEXAS EXES STANDING COMMITTEES:

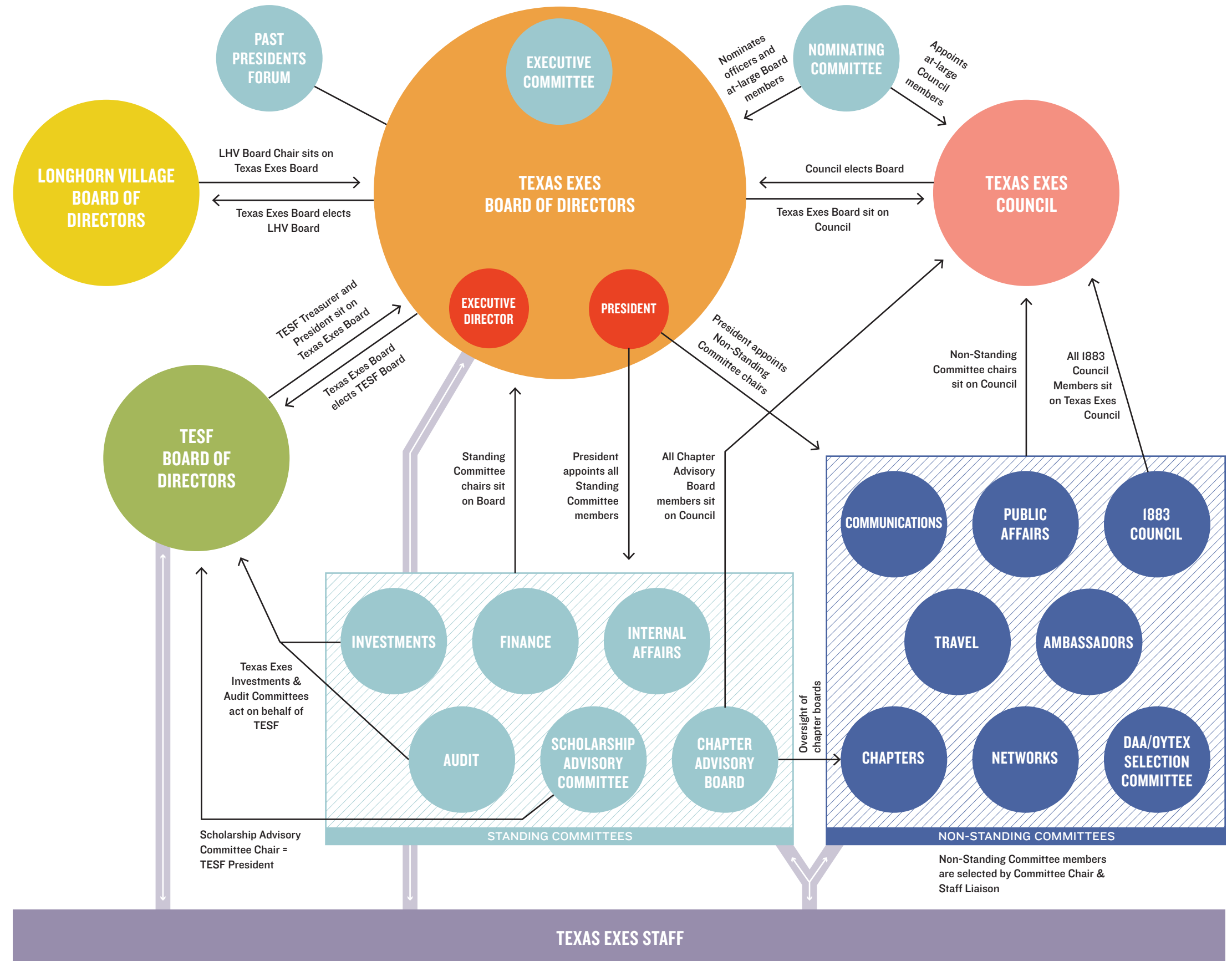
- **Investments:** This 12-person committee reports to the Board on the objectives, management and policies of the investment of Texas Exes endowed funds.
- **Audit:** This 3-person committee assists the Board in overseeing financial practices, legal and regulatory requirements; verifies auditor's independent status and oversees auditor performance.
- **Finance:** This 6-person committee, chaired by the Texas Exes Board Treasurer, provides oversight of the Texas Exes' overall financial status and strategy.
- **Internal Affairs:** This 3-person committee reviews the performance of the Executive Director, and recommends the total staff compensation budget to the Finance committee.
- **Scholarship Advisory Committee:** This 6-person committee develops and recommends policies concerning scholarship administration. The Chair of this committee will also serve as President of the TESF Board.
- **Chapter Advisory Board:** This committee of up to 16 members serves as an advisory board for chapter leaders, responsible for promoting Texas Exes in local communities through chapter organization and growth.

TEXAS EXES NON-STANDING COMMITTEES:

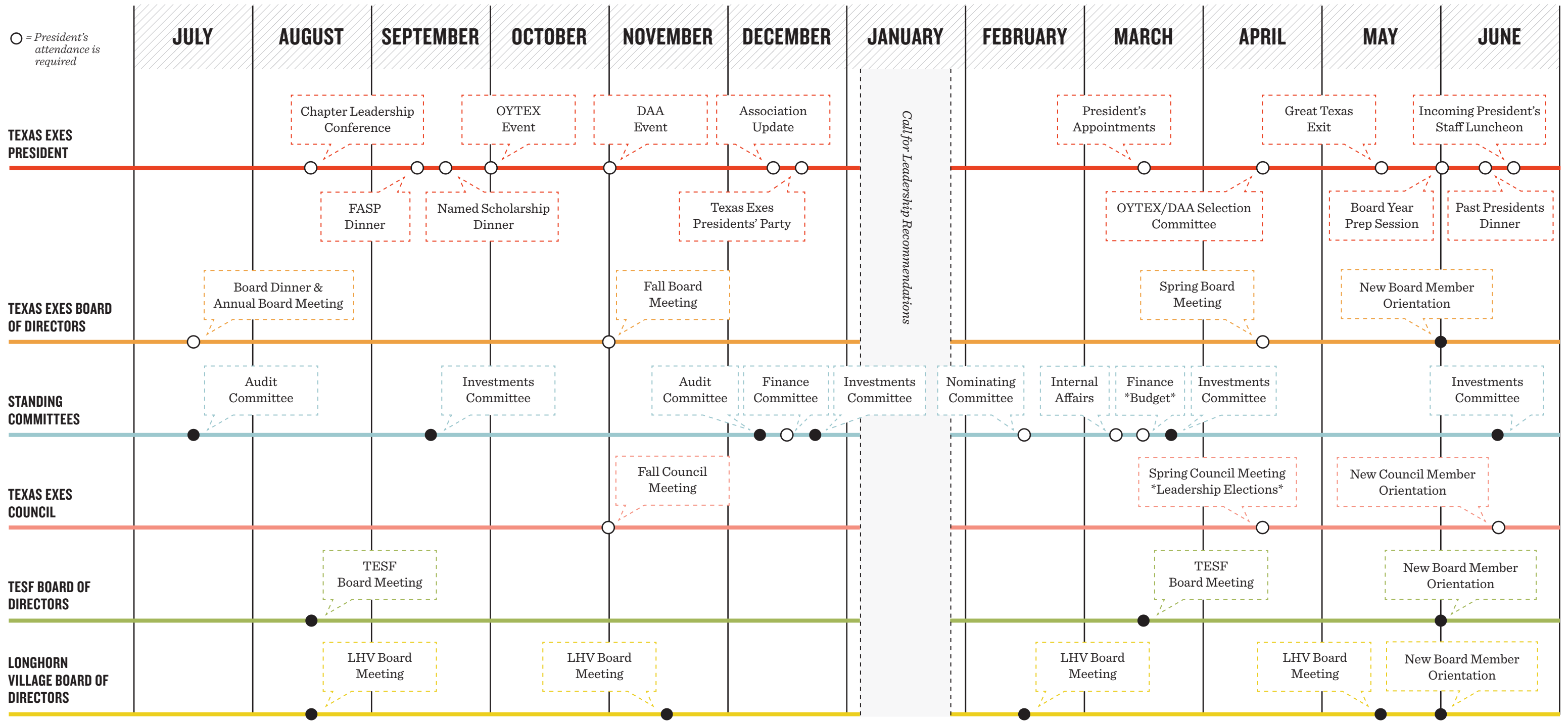
- **Communications:** Charts the big-picture direction of Texas Exes' communications operations and serves as advisors on near- and far-term strategies.
- **Public Affairs:** Drives and informs the Texas Exes advocacy and public affairs agenda.
- **1883 Council:** The 1883 Council is an ESA sponsored philanthropic group that fundraises for the Forty Acres Scholars Program.
- **Travel:** Provides input on destinations, trip inclusions, and issues that may impact the Texas Exes' travel program.
- **Ambassadors:** Serve at major on-campus Association events to promote the Texas Exes and make visitors feel welcome and at home.
- **DAA/OYTEX Selection Committee:** Selects recipients for the Distinguished Alumnus Awards and Outstanding Young Texas Ex Awards
- **Chapters:** Engage and organize alumni in local communities through high quality programming and events.
- **Networks:** Engage and organize alumni through non-geographic affinity connections such as ethnicity, profession, or student organization.

TEXAS EXES STAFF:

- The approx. 60-person Texas Exes staff works under the direction of the Executive Director to support the Texas Exes mission and strategic priorities as prescribed by the Texas Exes Board of Directors.
- The operating agreement between the Texas Exes and the TESF prescribes that Texas Exes will provide the staff necessary to facilitate the requirements of the Scholarship Foundation.
- Staff liaisons work with their respective committee chairs to plan meetings, and facilitate their committee's endeavors in supporting the Texas Exes mission and strategic priorities.



MEETINGS & MILESTONES LEADERSHIP YEAR // JULY 1ST - JUNE 30TH



KEY TASKS

- JULY**
 - AUDIT COMMITTEE:** Review audit report; recommend for Texas Exes & TESF Board approval
 - ANNUAL BOARD MEETING:** Approve audited financials; approve Charters, Chapter & Network Leadership
- AUGUST**
 - TESF BOARD MEETING:** Elect board officers; verify use of endowment funds; approve audited financials
 - LONGHORN VILLAGE BOARD MEETING:** Elect board officers
- DECEMBER**
 - AUDIT COMMITTEE:** Review and approve Texas Exes & TESF tax returns
 - FINANCE COMMITTEE:** Fiscal year review
- FEBRUARY**
 - NOMINATING COMMITTEE:** Prepare leadership nominations slate
- MARCH**
 - TESF BOARD MEETING:** Approve endowment distribution & scholarship administration budgets
 - INTERNAL AFFAIRS:** Executive Director's performance review; staff compensation review
 - FINANCE COMMITTEE:** Review balanced budget; recommend for Texas Exes Board approval; review Internal Affairs recommendations for staff compensation package
 - INVESTMENTS COMMITTEE:** Determine endowment distribution rate for Texas Exes Board approval
- APRIL**
 - SPRING BOARD MEETING:** Approve budget; elect TESF & LHV Boards
 - SPRING COUNCIL MEETING:** Leadership Elections

TEXAS EXES BOARD

Tenure for this 25-member Board begins on July 1st.
Terms are 1-year in length unless noted otherwise.

• PRESIDENT •

• PRESIDENT-ELECT •

• CHAIRMAN •

• EXECUTIVE DIRECTOR, EX-OFFICIO NON-VOTING MEMBER •

• TREASURER (FINANCE COMMITTEE CHAIR & TESF TREASURER) •

• SECRETARY •

(2) PAST PRESIDENTS, 2-year staggered terms

(6) AT-LARGE MEMBERS, 3-year staggered terms

LONGHORN VILLAGE BOARD CHAIRMAN, 3-year term

AUDIT COMMITTEE CHAIR

CHAPTER ADVISORY BOARD CHAIR

INTERNAL AFFAIRS COMMITTEE CHAIR

• INVESTMENTS COMMITTEE CHAIR •

• SCHOLARSHIP ADVISORY COMMITTEE CHAIR (TESF PRESIDENT) •

UT EXECUTIVE OFFICER

UT FACULTY MEMBER

MEN'S ATHLETIC COUNCIL REPRESENTATIVE

DEVELOPMENT BOARD REPRESENTATIVE

INTERNATIONAL ALUMNUS REPRESENTATIVE

TEXAS EXES COUNCIL

Tenure for this + 240-member Council begins on July 1st.
Terms are 1-year in length unless noted otherwise.

TEXAS EXES BOARD OF DIRECTORS

PAST PRESIDENTS OF THE TEXAS EXES

(30) AT-LARGE MEMBERS, 2-year staggered terms

BOARD-APPROVED TEXAS EXES CHAPTER PRESIDENTS AND NETWORK CHAIRS

DEAN-APPOINTED COLLEGE & SCHOOL REPRESENTATIVES

1883 COUNCIL MEMBERS, 3-year staggered terms

TEXAS EXES NON-STANDING COMMITTEE CHAIRS

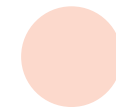
CHAPTER ADVISORY BOARD MEMBERS, 2-year staggered terms

UNIVERSITY CONSTITUENCY REPRESENTATIVES:

- WOMEN'S ATHLETIC COUNCIL REPRESENTATIVE
- PARENTS' ASSOCIATION REPRESENTATIVE
- LONGHORN FOUNDATION REPRESENTATIVE
- UT SYSTEM, EX-OFFICIO REPRESENTATIVE

UP TO (3) INTERNATIONAL REPRESENTATIVES, 2-year terms

COLOR KEY



Nominated by the Nominating Committee, Elected by Council



Appointed by the Incoming President, Elected by Council



Appointed by the Incoming President, Council election not required



Texas Exes Executive Committee